

BluPrints

Thermal Receipt Printer

Windows Driver Installation Guide **(USB-2 inch/ 58 mm)**

Aadharshila Mobility Solutions Pvt. Ltd.

E - 22, Sector – 51, Noida - 201301 UttarPradesh

Website : <http://www.bluprints.in/>

Driver Installation Guide (USB Port)

Please ensure that your printer is switched on & connected to your windows device.

Steps:

1. First Download the driver, you will find Printer Driver Setup .Click on it, to start installation.
2. Choose the desired language and click on “OK”

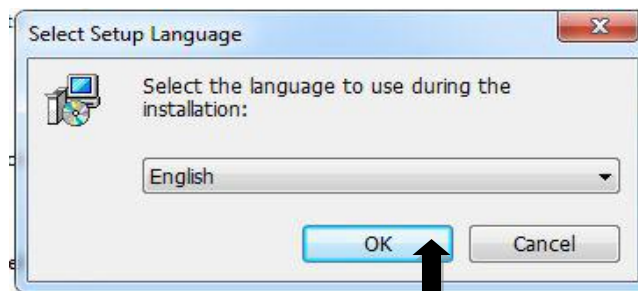


Figure: 1

3. You will see the following screen. Click on“Next”:

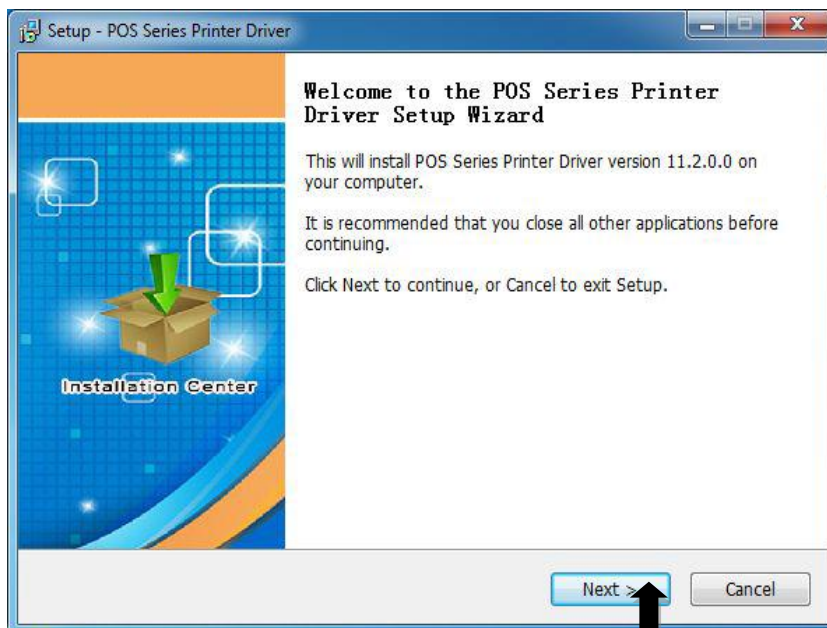


Figure: 2

4. Select “I accept the agreement” and click on “Next”, as shown below.

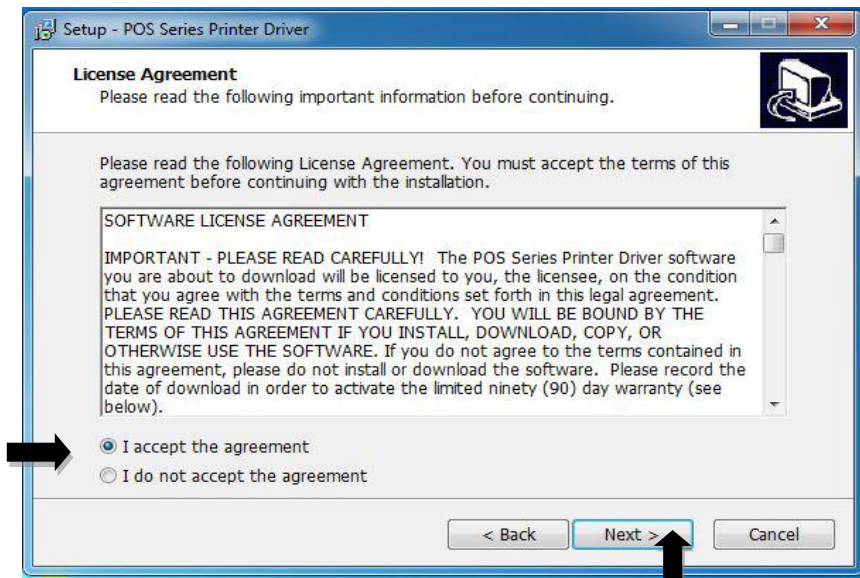


Figure: 3

5. Now choose the default path or browse the path where you want to save the exe. Click on Next.



Figure: 4

- Now you can see the following screen, here click on “Install” to start the installation. If your PC/Laptop has any antivirus software, please allow this installation.

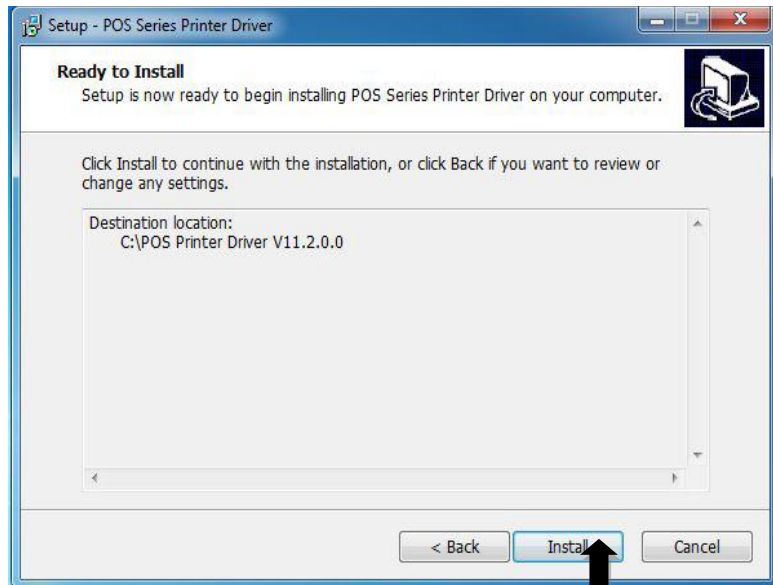


Figure: 5

- On completion of the installation, following screen will be displayed. Here choose the OS of your PC/Laptop, and select the printer model “POS 58Series Printer” for 2 inch / “POS 80 Series Printer” for 3 inch. Then click “USB Port Check”. Printer will print connected USB Port number.

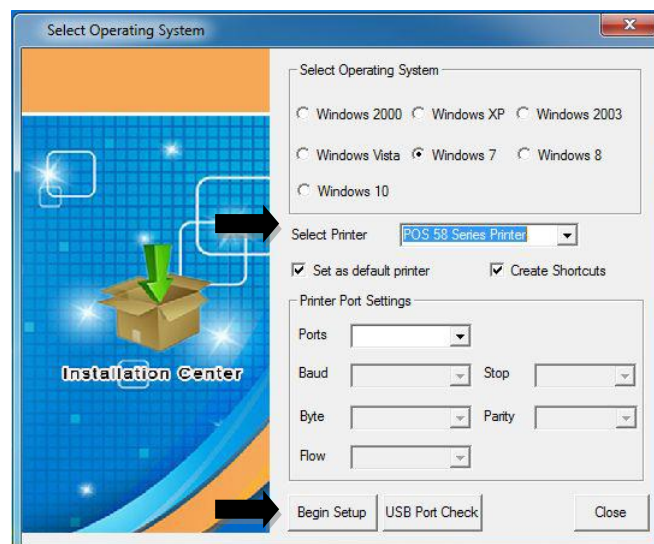


Figure: 6

8. Click on “Begin Setup”, Choose “Install”.

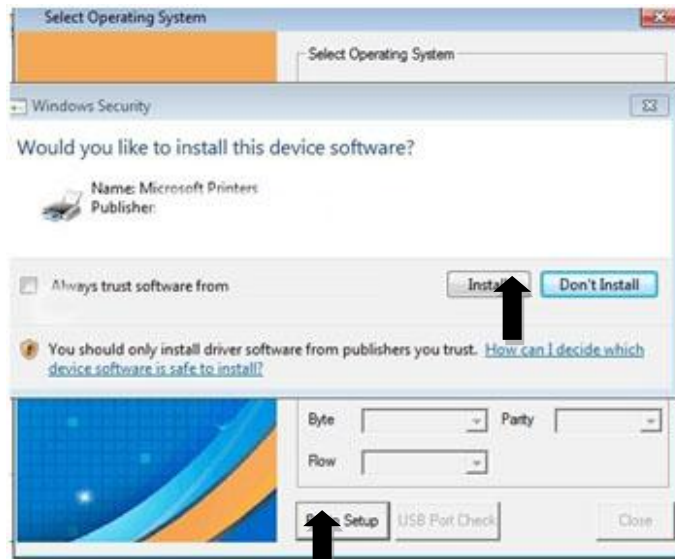


Figure: 7

9. Select the option “install this driver Software anyway”

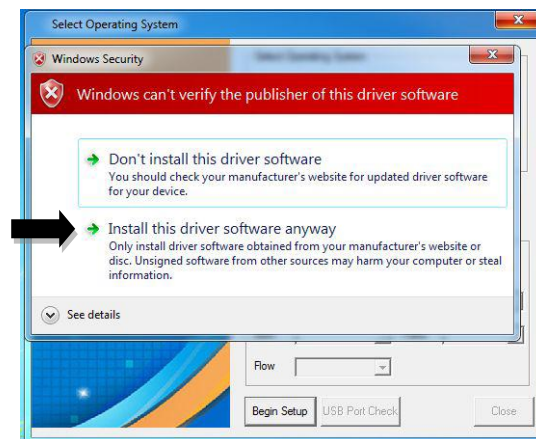


Figure:8

10. .When installation gets finished , you can find the printer “POS 58” in the control panel of your PC/laptop. In conventional option "Print Test Page" to verify that OK.